



FORTUNE CONNEX

PROPERTY SOLUTIONS



1/188 Waterloo Road Marsfield NSW

3 2 2

Delightful and well-appointed, this three-bedroom townhouse in the heart of Marsfield offers an exceptional blend of modern comfort and everyday convenience. Nestled within a tranquil, well-cared-for complex, this double-brick home enjoys a desirable north-east aspect and a contemporary design that warmly welcomes you.

Type : Townhouse
Price : Just Listed
View : <https://www.fortuneconnex.com.au/sale/nsw/northern-suburbs/marsfield/residential/townhouse/8174531>

Key Features

- Sunlit north-east orientation with durable double-brick construction
- Beautifully styled formal lounge alongside a spacious open-plan living area
- Generous dining space that effortlessly extends to a private, serene balcony
- Sleek modern kitchen featuring stainless steel appliances,



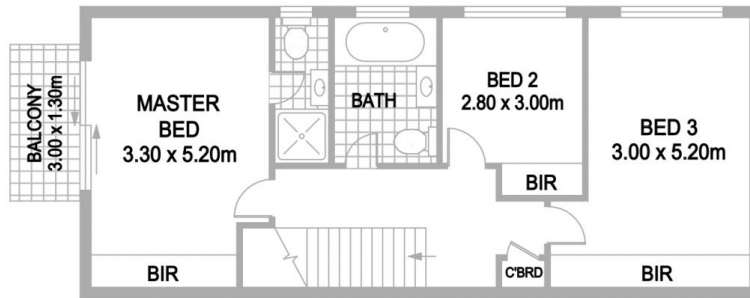
Lilian(Chunjiang) Zhong
0451088676



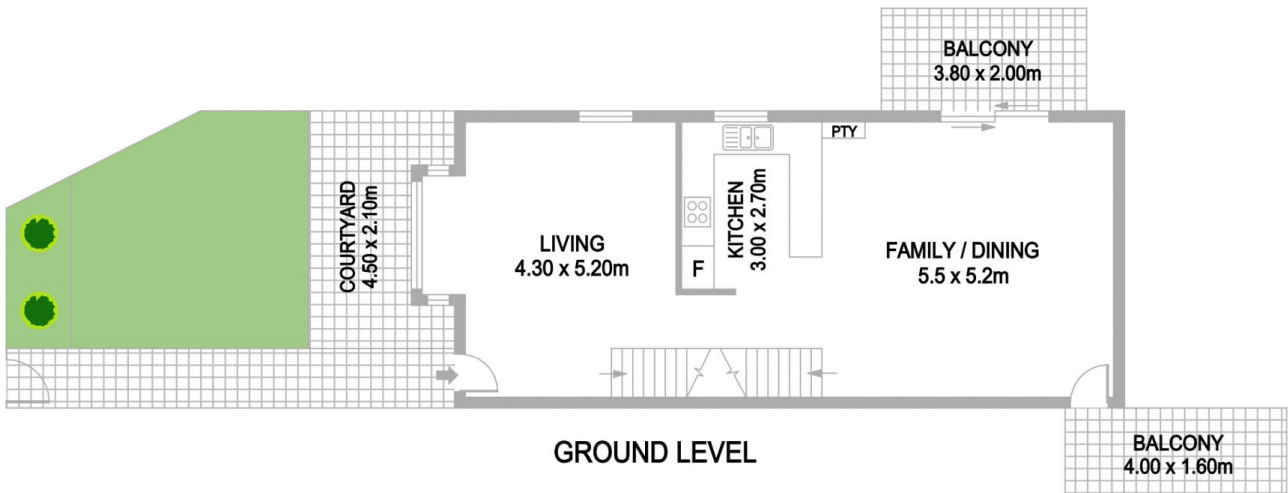
Jensen(Jixiang) He
0424666089

[For full version visit the website](https://www.fortuneconnex.com.au)

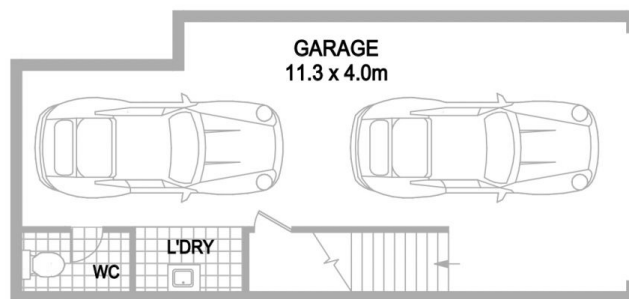
<https://www.fortuneconnex.com.au>



UPPER LEVEL



GROUND LEVEL



LOWER LEVEL



1/88 Waterloo Road, Marsfield

Disclaimer:
The information provided on this floor plan is shown for presentation purposes only and are not part of any legal document or title. They are subject to errors, omissions, inaccuracies and should not be used as a sole and accurate reference. Interested parties should make their own inquiries using independent sources.



FORTUNE CONNEX
PROPERTY SOLUTIONS