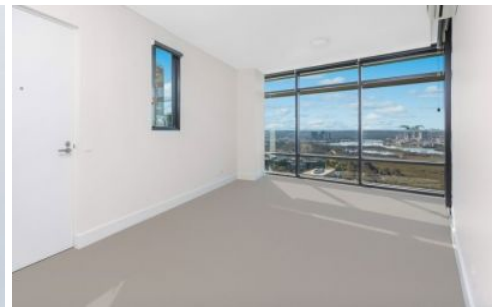




FORTUNE CONNEX

PROPERTY SOLUTIONS



2009/1 Brushbox Street Sydney Olympic Park NSW

1 1 1

This modern apartment has a brilliant location of Sydney Olympic Park, with the view of parks, lakes and sports venues.

Only 2 mins walk to the Sydney Olympic Park train station with all facilities including restaurants, cafes, bus stops and ferry terminal.

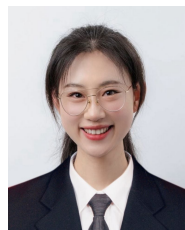
Features:

- Large size bedroom, with built-in Wardrobes
- Breathtaking Olympic Park views
- Sized study room, could be used as bedroom
- open plan living area with air-conditioning
- A gourmet galley kitchen with stainless gas cooktop

Type : Apartment

Price : \$690 pw

View : <https://www.fortuneconnex.com.au/lease/nsw/inner-west/sydney-olympic-park/residential/apartment/8170490>



Ada(Hongjun) Liu
0451479077



Rental Fortune Connex
0480100267

[For full version visit the website](https://www.fortuneconnex.com.au)

<https://www.fortuneconnex.com.au>