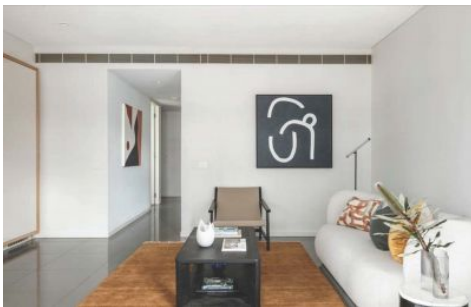




# FORTUNE CONNEX

PROPERTY SOLUTIONS



**Level 11/1 Chippendale Way Chippendale NSW**

**2** **1** **1**

\*Video Tour Available\*

[https://youtu.be/sJ8gekAx3\\_o?si=PqjHH-c3tfyGDsAp](https://youtu.be/sJ8gekAx3_o?si=PqjHH-c3tfyGDsAp)

Chic minimalism and superb design features take centre stage in this contemporary 1 Bedroom +Huge Study haven on level 11 of 'Duo' tower in the bustling Central Park development.

- Peaceful, luminous bedroom with built-in robes and carpet in the bedroom
- Clean-lined galley kitchen with top-tier integrated appliances
- Open living/dining flows to the practical winter garden space

[For full version visit the website](https://www.fortuneconnex.com.au)

**Type** : Apartment  
**Price** : CentralPark|1CarSpace\$1200 pw  
**View** : <https://www.fortuneconnex.com.au/lease/nsw/sydney-city/chippendale/residential/apartment/8149587>



**Eddy(Yanqing) Huang**  
**0450 775 899**



**Rental Fortune Connex**  
**0480100267**

<https://www.fortuneconnex.com.au>

