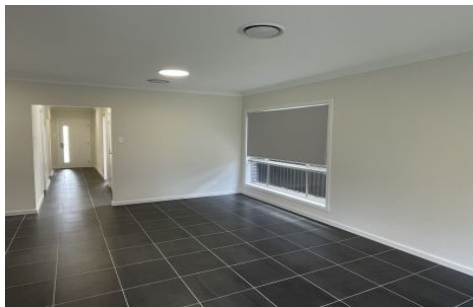




# FORTUNE CONNEX

PROPERTY SOLUTIONS



**22 Ansell Street Marsden Park NSW**

4 2 1

This near new family home offers a lot more than low maintenance life with its great location close to all the amenities, schools, shopping centre and playgrounds.

Features include:

- \* Four spacious bedrooms, master room with walk-in robe & ensuite
- \* Two designer bathrooms with quality finishing
- \* Brand new carpet throughout the bedrooms
- \* Living area with tiles and plenty of natural sunlight
- \* Sleek design open kitchen with stainless steel appliances
- \* Ducted air conditioning
- \* Lockup garage
- \* Low maintenance private backyard

Location features:

- \* Walking distance to Elara sporting fields

**Price** : Deposit Taken

**View** : <https://www.fortuneconnex.com.au/lease/nsw/western-sydney/marsden-park/residential/house/8027151>



**Sophia Su**  
0480 100 267



**Rental Fortune Connex**  
0480100267

<https://www.fortuneconnex.com.au>