



# FORTUNE CONNEX

PROPERTY SOLUTIONS



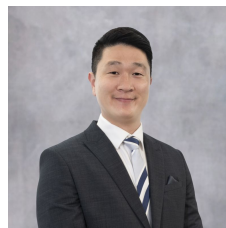
## 1 Mount Close Cranebrook NSW

3 2 2

Situated on a generous 808m<sup>2</sup> parcel of land in the heart of Cranebrook, this unique offering is tailor-made for those with a vision for contemporary living in a serene and central setting.

- \* 3 generous bedrooms, all with build-in robes
- \* large living areas with a huge balcony & gorgeous mountain views
- \* Downstairs features an extra bathroom and separate laundry, plus room for expansion
- \* Only 450m(approx.) to Cranebrook Village; Approx. 7 mins walk or 2 mins drive
- \* Minutes walk to local schools: approx. 4 mins to Braddock Public School, 9 mins to Cranebrook High School
- \* Approx. 8 mins drive to Penrith station, providing easy

**Type** : House  
**Land Size** : 808 sqm  
**View** : <https://www.fortuneconnex.com.au/lease/nsw/western-sydney/cranebrook/residential/house/7882279>



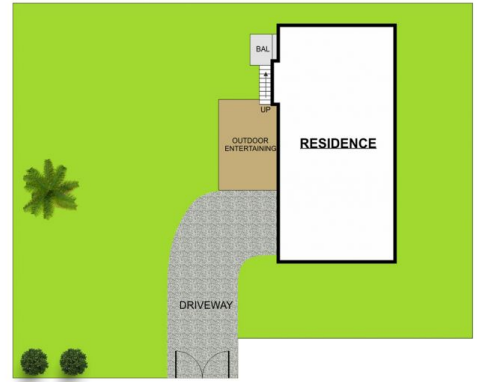
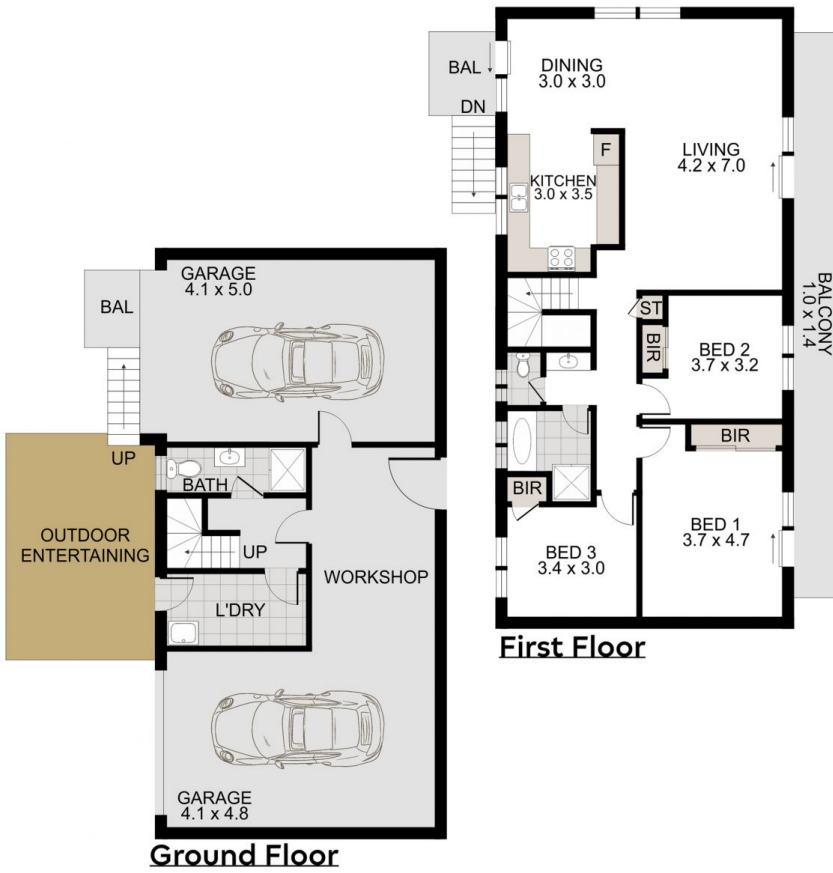
**Tommy Ha**  
0430097599



**Rental Fortune Connex**  
0480100267

[For full version visit the website](https://www.fortuneconnex.com.au)

<https://www.fortuneconnex.com.au>



# 1 Mount Close, Cranebrook



Disclaimer:  
The information provided on this floor plan is shown for presentation purposes only and are not part of any legal document or title. They are subject to errors, omissions, inaccuracies and should not be used as a sole and accurate reference. Interested parties should make their own inquiries using independent sources.