



# FORTUNE CONNEX

PROPERTY SOLUTIONS



**5004A/16 Constitution Road Ryde NSW**

2 2 1

Embracing a sleek modern aesthetic and bright aspect, this near new apartment promises convenient waterside living. It's quietly set in the 'Crewman' complex, near Shepherds Bay Village Plaza, Meadowbank Station, schools, ferries and city buses.

- Free flowing layout with defined living and dining zones
- High quality stone kitchen has gas cooking and breakfast bar
- Large bedrooms with built-in wardrobes, main with ensuite
- Modern fully tiled bathrooms and concealed internal laundry
- Study room, ducted air conditioning and basement parking

[For full version visit the website](https://www.fortuneconnex.com.au)

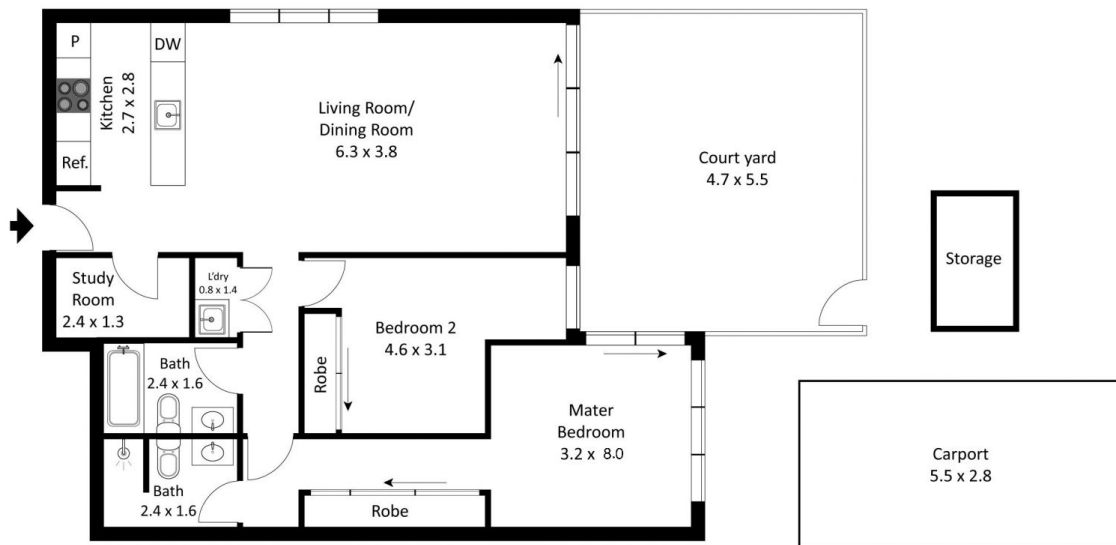
**Type** : Apartment  
**Price** : \$ 795,000  
**View** : <https://www.fortuneconnex.com.au/sale/nsw/northern-suburbs/ryde/residential/apartment/7703569>



**Ethan Li**  
0404 899 545



**Lilian Zhong**  
0451088676



The floor plan is not to scale; measurements are indicative and in metres. Exterior elements are not in position. Plans should not be relied on. Interested parties should make and rely on their own enquiries.