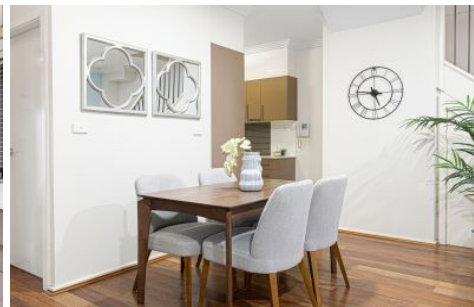
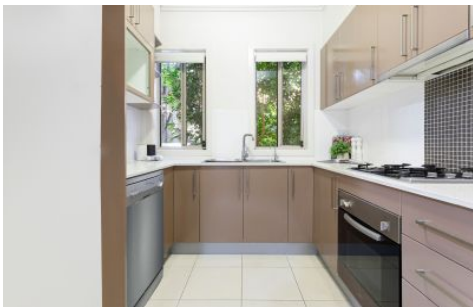




FORTUNE CONNEX

PROPERTY SOLUTIONS



4/12 Sophie Street Telopea NSW

2 2 1

Bright, oversized and versatile, this north facing townhouse offers an ideal low maintenance lifestyle opportunity for first homebuyers or investors. Prime location, close to public transportation and parks, the perfect blend of convenience and tranquility.

Type : Townhouse

Price : \$ 870,000

View : <https://www.fortuneconnex.com.au/sale/nsw/parramatta/telopea/residential/townhouse/7703558>

- * Rear position in complex with ample garden space and private courtyards
- * Spacious living/dining area connects seamlessly to outdoor entertaining space
- * Large master complete with walk-in wardrobe and ensuite
- * Large kitchen features gas cooktop and ample storage space
- * Full family bathroom upstairs plus guest w/c on ground floor



Ethan Li
0404 899 545

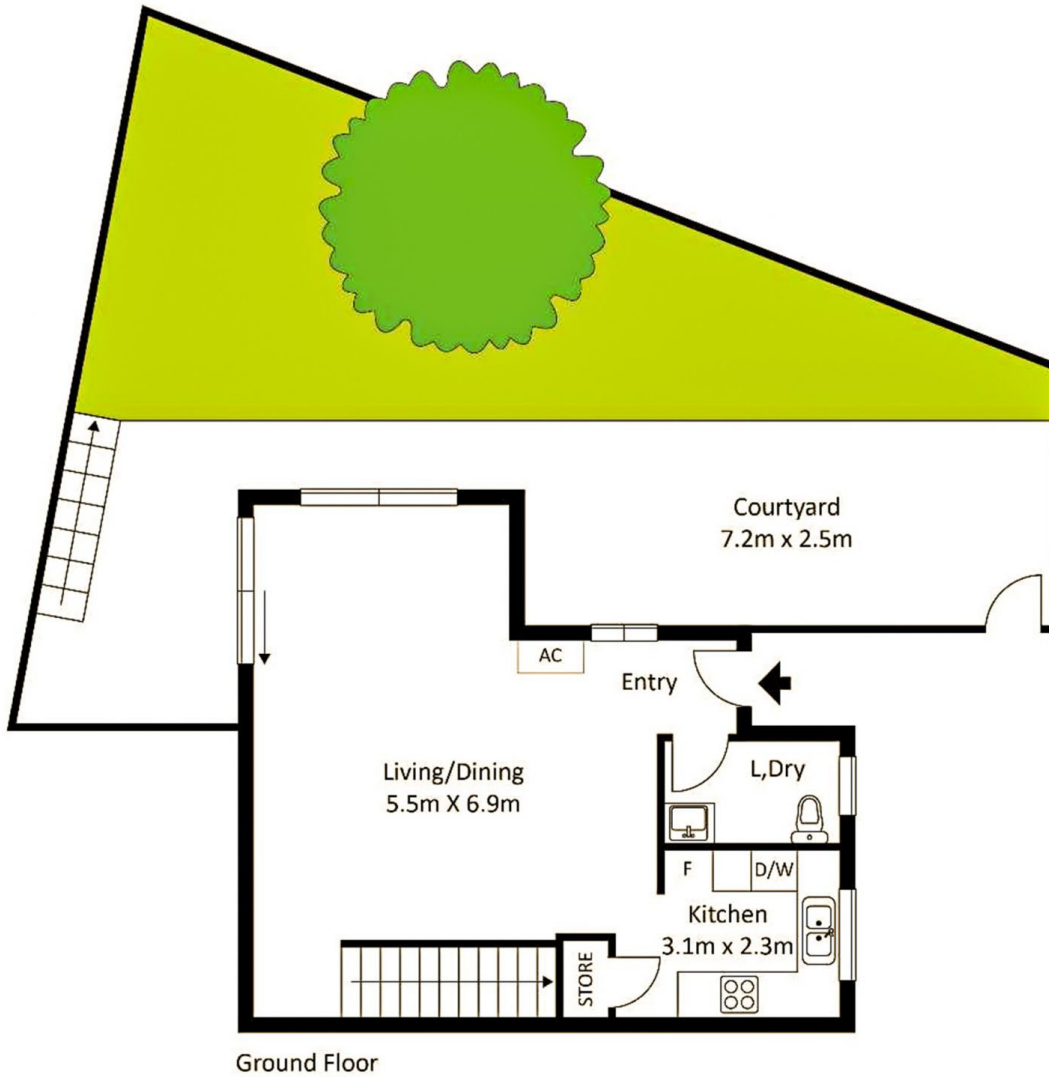


Robin Yan
0451 787 774

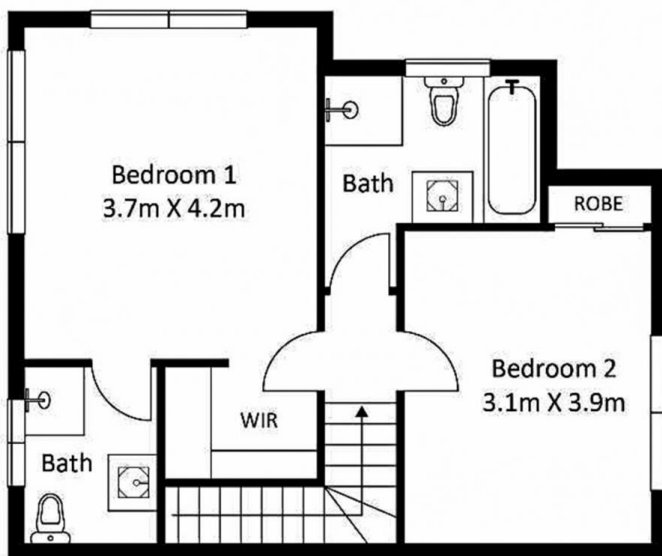
[For full version visit the website](https://www.fortuneconnex.com.au)

<https://www.fortuneconnex.com.au>

4/12 Sophine Street Telopea NSW



Ground Floor



First Floor

