



FORTUNE CONNEX

PROPERTY SOLUTIONS



198 Parkway Drive Marsden Park NSW

4 2 1

Fortune Connex is proud to present this stylish and modern two-storey house located in a newly developed and quiet street of Marsden Park. This stunning two-storey house home offers the high-end quality throughout the house and features four generous bedrooms, separate lounge room, spacious living and dining area, making it the ideal home for families or those who love to entertain.

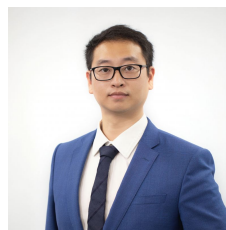
Located just minutes from local shops and within walking distance to the Northbourne Public School, this home truly has it all. Don't miss out on the opportunity to make it yours!

Property features:

* Four generous-sized bedrooms, master bedroom with

Type : House

View : <https://www.fortuneconnex.com.au/sale/nsw/western-sydney/marsden-park/residential/house/7703546>



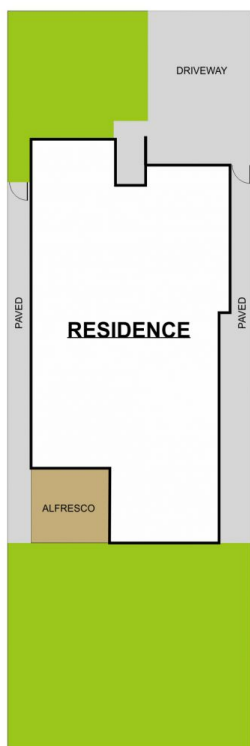
Jack Lin
0491968645



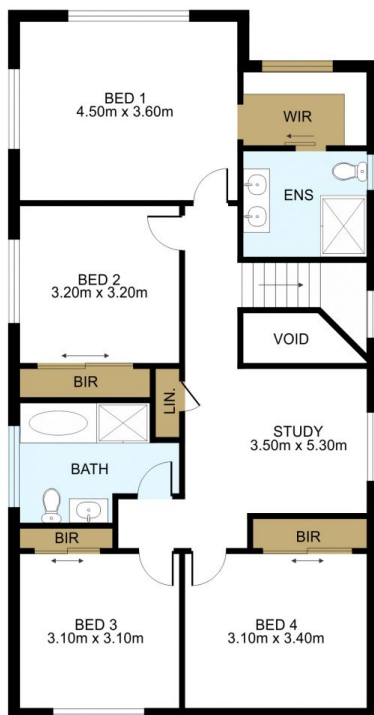
Robin Yan
0451 787 774

[For full version visit the website](https://www.fortuneconnex.com.au)

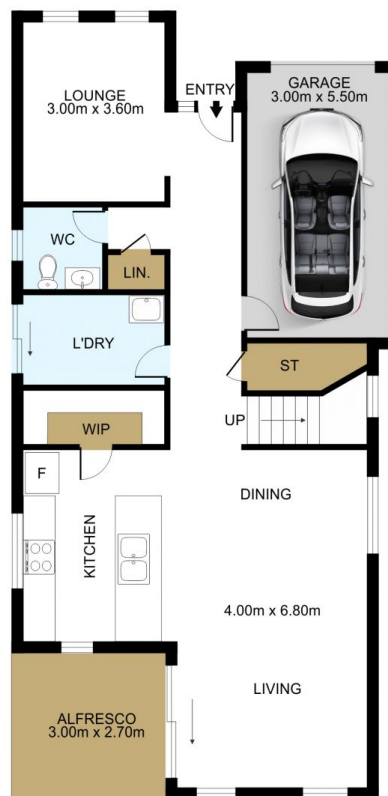
<https://www.fortuneconnex.com.au>



Site Plan
Not On Scale



First Floor



Ground Floor

DISCLAIMER: THIS IS FOR ILLUSTRATIVE PURPOSES ONLY.
ALL DIMENSIONS ARE APPROXIMATE AND IT DOES NOT
CONSTITUTE PART OF ANY LEGAL DOCUMENTS.

ADDRESS:

198 Parkway Drive Marsden Park