



# FORTUNE CONNEX

## PROPERTY SOLUTIONS



**1303/10 Norfolk Street Liverpool NSW**

2 2 1

Conveniently located in the heart of Liverpool CBD, this near-new north facing two-bedroom apartment with spacious study has been designed for both functionality and natural lighting, open plan living and dining, together with panoramic views across Sydney to the majestic Blue Mountains; plus a supermarket store, café and garden on the ground level providing a vibrant living in a modern city.

Designed by multi-award-winning architects, Mosca Pserras, this apartment project has been crafted with quality interiors, features sublime finishes and careful attention to every details.

Also, the apartment is a short stroll to all essential amenities including Liverpool train station, Westfield

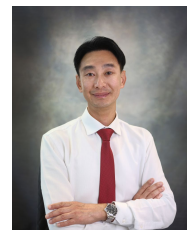
**Type** : Apartment

**Price** : \$ 520,000

**View** : <https://www.fortuneconnex.com.au/sale/nsw/liverpool-fairfield/liverpool/residential/apartment/7703531>



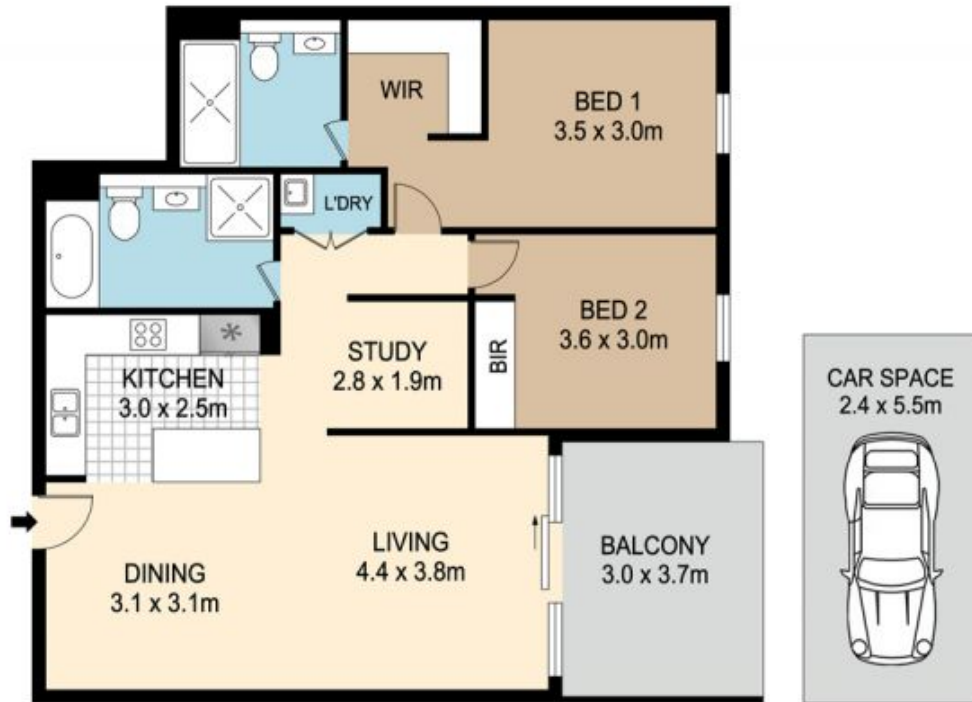
**Lilian Zhong**  
0451088676



**Michael Dai**  
0400168148

[For full version visit the website](https://www.fortuneconnex.com.au)

<https://www.fortuneconnex.com.au>



## 1303/10 NORFOLK STREET, LIVERPOOL



**DISCLAIMER** : PLANS SHOWN ARE FOR MARKETING PURPOSES ONLY. ALL DIMENSIONS ARE APPROXIMATE AND NOT TO SCALE. THEY ARE SUBJECT TO ERRORS AND INACCURACIES AND NO LIABILITY WILL BE ACCEPTED. INTERESTED PARTIES SHOULD MAKE THEIR OWN INQUIRES.



**FORTUNE CONNEX**  
PROPERTY SOLUTIONS