



FORTUNE CONNEX

PROPERTY SOLUTIONS



408/28 Shepherd Street Liverpool NSW

1 1 1

With the stunning location in the sought after Paper Mill in the Bindery building on Georges River, this is a unique opportunity for Your Dream Home that cannot miss, especially first home buyers!

This immaculate one-bedroom apartment on the 4th floor is the epitome of modern living, with quiet and peaceful community. Designed by Internationally Acclaimed Bates Smart Architects. Just moments to Macquarie Park. Shopping Centre, playground, rooftop gardens, BBQ, 25-meter pool and gym. Yes, you got everything.

The apartment features:

- Main bed has a walk in robed & ensuite
- Open living area with timber flooring

[For full version visit the website](https://www.fortuneconnex.com.au)

Type : Apartment

Price : \$ 399,000

View : <https://www.fortuneconnex.com.au/sale/nsw/liverpool-fairfield/liverpool/residential/apartment/7703516>

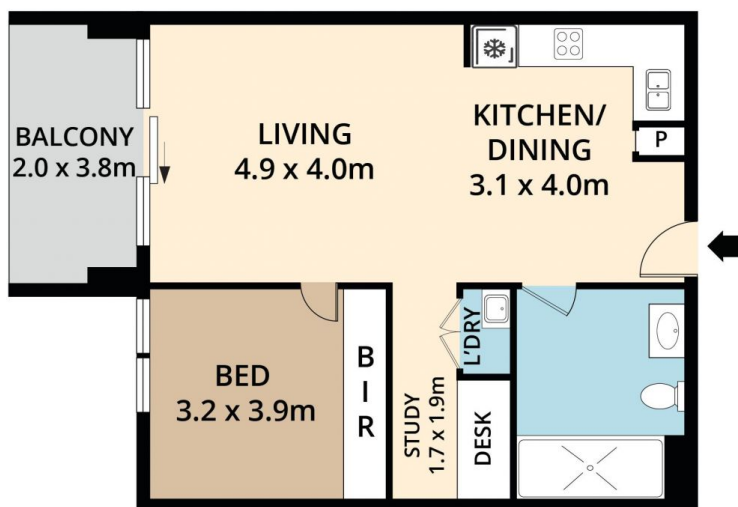
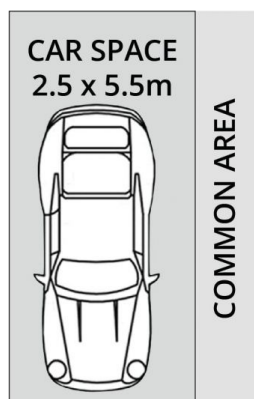


Robin Yan
0451 787 774



Sophia Su
0480 100 267

<https://www.fortuneconnex.com.au>



D408/28 SHEPHERD ST, LIVERPOOL



DISCLAIMER: PLANS SHOWN ARE FOR MARKETING PURPOSES ONLY, ALL DIMENSIONS ARE APPROXIMATE AND NOT TO SCALE. THEY ARE SUBJECT TO ERRORS AND INACCURACIES AND NO LIABILITY WILL BE ACCEPTED. INTERESTED PARTIES SHOULD MAKE THEIR OWN INQUIRIES.



FORTUNE CONNEX
PROPERTY SOLUTIONS