



FORTUNE CONNEX

PROPERTY SOLUTIONS



192 Elara Boulevard Marsden Park NSW

4 2 2

Enviably positioned in a master planned popular community Elara, heart of a fast-growing suburb Marsden Park, this double storey with double garage near-new house showcases an exceptional and contemporary lifestyle.

Inspired by modern design with quality inclusions from Australia's Award-Winning builder Edgewater Homes, this stylish home is not only palatial, spacious but functional, boasting multiple living areas and a manicured outdoor entertaining private back yard.

A stone's throw away from bus stops, childcare facility, walking distance to shopping centre, public and private schools, sport fields, parks, and other amenities, a short

Type : House

Price : \$ 1,235,000

View : <https://www.fortuneconnex.com.au/sale/nsw/west-ern-sydney/marsden-park/residential/house/7703492>



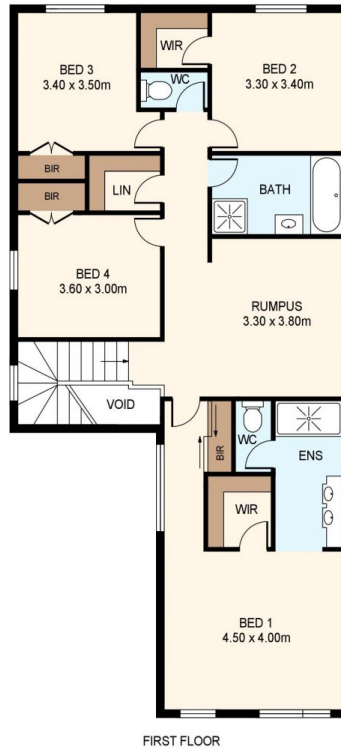
Sophia Su
0480 100 267



Robin Yan
0451 787 774

[For full version visit the website](https://www.fortuneconnex.com.au)

<https://www.fortuneconnex.com.au>



DISCLAIMER: THIS IS FOR ILLUSTRATIVE PURPOSES ONLY.
ALL DIMENSIONS ARE APPROXIMATE AND IT DOES NOT
CONSTITUTE PART OF ANY LEGAL DOCUMENTS.

ADDRESS:

192 ELARA BOULEVARD, MARSDEN PARK